



YIELD DATA COLLECTION

QUESTIONS TO ASK YOUR PROVIDER:



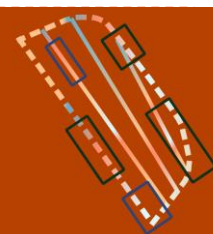
FORMAT Are data available for download in open formats so that I can use them in any software programme I'd like? What formats are available?

DATA CLEANING Will the data be 'cleaned' before they're made available to me, for example by removing points where the combine was turning or correcting for the effects of the combine partially overlapping previously harvest areas?



RAW DATA Are the data connected to GPS locations and attributes (at least dry yield)? As this data is often collected over multiple years, is raw data associated with its collection year and coordinates?

CALIBRATION What calibrations, if any, were made to the instrument by the in-field operator and were they recorded? Has the calibration data been supplied separate to the yield measurements? If so, what instrument was used?



COLLECTION What information can be provided about how the data was collected and processed? What additional variables were being measured?

OWNERSHIP Who owns the data? Who can it be freely shared with? How do any licenses restrict data sharing and reuse?





YIELD DATA COLLECTION

COMPLETE METADATA INCLUDES:

- INSTRUMENT TYPE** - make and model
- DATES AND TIMES** of data collection
- AREA COORDINATES** of data collection
- LOCAL WEATHER** data source source that includes cumulative rainfall and average temperature readings collected each year
- MANAGEMENT ACTIVITIIES** Irrigation and fertilization regimes associated with date and area
- SPATIAL RESOLUTION** size of the area represented by 1 pixel
- CROP TYPE** and attributes (i.e., indicative root depth)
- KNOWN TOPSOIL SOIL VARIATIONS**, if available, and any known archaeological features
- REFERENCES** to any related data
- PROCESSING** steps and parameters key data
- NON-SPATIAL FORMAT** (.txt, .csv, .json) clear delineation of variables measured by instrument and proprietary data format for instrument
- SPATIAL FORMAT** (shapefile, ejson...)
- SOIL TYPE AND MOISTURE**

WHY DOES THIS MATTER TO YOU?

Yield data is an output of everything that has happened during the cropping season. Asking for more information on how the data was collected and how the instrument was calibrated will allow you to better use this data as a proxy for archaeological crop marks when crop marks are not visible through aerial methods.